



# WASTELINE : Edition 1/2021

The Newsletter of the Hong Kong Waste Management Association  
Web Site: [www.hongkongwma.org.hk](http://www.hongkongwma.org.hk)

Focus

Opinion

News

Conference

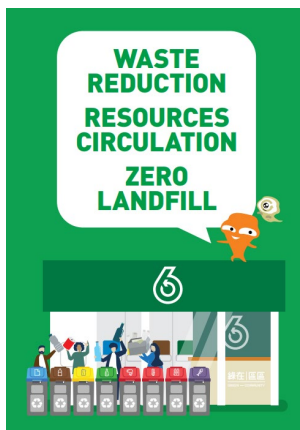
YMC

Learning

Events

Message from the Editor:  
This Newsletter requires your participation. We would like to hear your experiences in implementing good waste management practices in Hong Kong or overseas. If you have an interesting story to tell, please write to me at [david.pegg@arup.com](mailto:david.pegg@arup.com)

**Learning:**  
YMC Career Sharing and Mentorship



**Event:**  
HKWMA Spring Cocktail and Presentation of Waste Blueprint 2035

**Focus:**  
PRS for Plastic Beverage Containers

**News:**  
Bills Committee Approves MSW Charging





# PRS for Plastic Beverage Containers

The Hong Kong Waste Management Association has been a strong advocate of plastic recycling and source separation of plastic to enable cleaner and easier recycling. In response to the recent Government public consultation on the PRS for Plastic Beverage Containers (PPRS) we have in conjunction with other professional bodies and organizations expressed our support to the proposed PRS legislation.

The association is of the view that all measures that mitigate plastic pollution and enable sustainable re-use of plastic products should be enacted to drive change in disposal and re-use behaviours.

Imposing responsibilities on plastic producers to assign rebate value to the plastic beverage containers they produce will encourage behaviours that are conducive to separation from the normal waste stream and enhance recyclability. Effective collection and recovery will require convenient placement of collection and redemption points and priority should be given to residential housing estates, supermarkets, transport facilities and shopping centres.

Opinion surveys indicate extensive public and industry support towards recycling of single use plastic beverage containers, there is a need to build confidence, transparency and traceability that materials are truly being recycled and do not end up in landfill. Licensing of recycling facilities would facilitate a framework to build trust and transparency of the recycling network.

Whilst the PPRS is focused on single use plastic beverage containers there is a need for the PPRS to guard against a transition to other non-recyclable or non-biodegradable materials that may fall outside the scope of the PPRS. The short and medium term objection of the PPRS seeks to enhance the recovery rate but we need to be mindful that plastics cannot be recycled indefinitely since their properties will deteriorate each time they are recycled and the ultimate objective would be to explore alternatives to plastics that have perpetual recyclability.





# HKWMA Spring Cocktail and Waste Blueprint 2035

## 27 April 2021

Given ongoing restrictions imposed by the pandemic the annual spring cocktail reception was conducted virtually on 27 April 2021.

Nonetheless, in keeping with tradition the event provided a platform to showcase topical waste management issues. We were honoured to have the presence of Mr KS Wong, the Secretary of Environment, to present the recently launched Waste Blueprint for Hong Kong 2035.

The Blueprint released in February 2021 sets a new vision for the coming years since the waste challenges in Hong Kong remain acute. The Blueprint 2035 builds upon the initiatives and measures set-out in the Blueprint for Sustainable Use of Resources 2013-2022 and the Secretary outlined the three pillars that are fundamental to the success of the new blueprint, namely:

- Waste Reduction,
- Resource Circulation and
- Zero Landfill and how these supported the Governments wider goals to achieve Carbon Neutrality by 2050 of which waste is a contributing source.



Summary of Waste Blueprint 2035





# HKWMA Spring Cocktail and Waste Blueprint 2035

## 27 April 2021

Unlike the previous Blueprint, the document provides a roadmap of the measures and strategies to be adopted and has fewer absolute targets than the previous Blueprint. The Blueprint sets out two targets.

- i) Medium term target of per capita disposal reduction by 40% through implementation of MSW charging with a complementary increase in recovery rate to 55%.
- ii) Long term target of developing waste to energy facilities to move away from reliance on landfills.

The Secretary was keen to highlight the achievements of the previous Blueprint and made specific reference to new regulations for producer responsibility schemes that have enhanced recovery of WEEE, seen a further reduction in use of plastics shopping bags, enabled recovery of 27.600 tonnes of glass containers and seen installation of 60 no. reverse vending machines for plastic bottles.

The Secretary also focused on the community recycling network with specific reference to the 22 no. new recycling stores, community green stations and the green outreach campaigns and how EPD had been piloting centralised collection services in three districts for plastic with a view for promoting the industry to be more sustainable and achieve reasonable commercial outcomes for sourced separated collection.

The previous Blueprint envisaged several new waste treatment facilities and the Secretary was pleased to report that T-Park, O-Park 1, O-Park 2, I-Park and Y -Park were either operational or in advanced stages of construction and this diversified significantly how waste was progressively being moved away from landfill and informed further development of facilities within the new blueprint.

Looking ahead the Secretary had strong expectations for the new Blueprint and outlined the six major areas of action for waste reduction, waste separation, resources recirculation, industry support, innovation & cooperation and education & publicity. These actions when coupled with MSW Charging and PRS legislation will enable enhancement of source separation and collection of numerous waste streams with a view that industry would be able to capture the opportunities for enhance recycling and material recirculation. The Secretary indicated that education and publicity would continue to be at the heart of the new blueprint and utilisation of green technology funds could stimulate innovation and cooperation within the industry.

In summary, the Secretary re-iterated that the Government was committed to making Hong Kong a Zero Waste City that was integrated with the Greater Bay Area and that government and the industry needed to work hand in hand to improve waste management in Hong Kong.

Questions to the secretary, following the presentation, focused on how could the industry better support the Blueprint and local use of recyclables. In response key areas of food waste and plastic waste were highlighted as areas needing specific and immediate attention and for Hong Kong to leverage synergy with the Greater Bay Area for resource recirculation. [waste blueprint 2035\\_eng.pdf \(enb.gov.hk\)](#)





# Bills Committee Approves MSW Charging

After more than two decades of debate and public consultation the passage of the Waste Disposal (Charging for Municipal Solid Waste) (Amendment) Bill 2018 was approved by the Legislative Council, 26 August 2021, to create a new milestone for Hong Kong's waste management journey.

The HKWMA welcomes this positive step and we look forward to the implementation of the legislation and its contribution to the reduction of municipal solid waste disposal in Hong Kong. The Bill is long overdue and in our Newsletter Edition 1/2020 we outlined the consequences of delayed implementation following the shelving of the Bill in June 2020.

The industry now has the next 18 months to get prepared. There are many challenges ahead that need to be tackled from concerns of fly-tipping, to food waste collection, and efficient collection systems for recyclables, and as an association we will contribute to resolving these issues to help drive Hong Kong towards a circular and sustainable economy as set out in the Waste Blueprint for Hong Kong 2035.

The MSW Charging scheme comprises two basic charging mechanisms:

- i) Charging by pre-paid designated garbage bags/labels that will be applicable to the majority of residential, street level shops and institutional premises, or
- ii) Charging by weight for oversized or irregular shaped waste from commercial and industrial premises.

Education, industry/community out-reach and allocation of resources to strengthen the recycling sector will be key factors to the success of the MSW Charging Scheme. Public Opinion surveys conducted by NGO's have typically indicated overwhelming public support for MSW Charging and the Polluter Pay Principle.

As active waste management practitioners we call upon all members to drive the necessary change to act responsibly to enhance recycling efforts and deal with residual waste appropriately and creativity to strive towards the zero landfill aspiration of the Waste Blueprint for Hong Kong 2035.





# Technical Visit to Billie Upcycling Plant

## 28 May 2021

We announced the opening of the Billie Upcycling Plant in the last edition of Wasteline. Since that time members have now had the opportunity to visit the plant in person via a technical visit held on 28 May 2021 and organized by the Young Members Committee.

Textile waste from the fashion and hospitality industries has long been a first-world environmental problem. The Billie Upcycling located in Tai Po Industrial Estate, the gold medal winner in the International Exhibition of Inventions of Geneva which applies waterless solution for recycling textile waste.

While most recycling processes require high volumes of water and chemicals, The Billie System adopts a waterless solution with ozone for recycling textile waste, lowering harmful effects to the environment. The process is almost entirely automated, thereby reducing the high labour costs associated with textile recycling. The machines can process up to three tonnes of recycled fibres per day, which can be blended with virgin materials to produce yarn for various products and garments. With this sustainable initiative, the company upcycles textile waste into new yarn, thereby creating competitive advantage while addressing a pressing environmental issue.

Besides, the tour also emphasised on the change in consumption habits. On average, Hong Kong has more than 340 tonnes of discarded clothes and textiles are landfilled daily, which is equivalent to approximately 700,000 sweaters. The excess items generate a huge amount of waste that simply cannot be solved through recycling efforts alone. This means the solution lies not in the scalability of upcycling initiatives, but in encouraging a shift in current business models and practices.



The Billie System



Delegation to Billie Upcycling Plant



# Offering Our Opinion Towards the Policy Address 2021

## 24 August 2021

On the 24 August 2021 the HKWMA attended the policy address consultation meeting to seek views from the Waste Management sector and we offered the following opinions.

"The Hong Kong Waste Management Association has been in support of MSW Charging since its inception, and although there has been overwhelming support from the public, there hasn't been much progress in the past regarding the scheme's implementation but HKWMA is pleased to see that the draft bill was presented to the Legco Sub-committee members recently, and hope that it will pass its second reading.

Since issue of the Blueprint for Sustainable Uses of Resources 2013-2022 the target to reduce the per capita disposal has not trended towards the 0.8 kg/person target set for 2022. The blueprint placed significant emphasis on diversion of waste from landfill through provision of infrastructure and governance such as charging schemes and producer responsibility schemes. Although the Government has worked strenuously on providing downstream infrastructures to facilitate the diversion of waste from landfill, including the construction of WEEE Park, O Park 1 and 2, I Park etc., some of the facilities such as O Park 2 and I Park will not come on-line until 2023 and 2025, respectively, which ultimately increases the burden on the existing landfill. It is important to increase the pace and make the transition to renewable energy facilities (i.e.. less reliance on landfills for waste disposal) and establish a mechanism to facilitate circular economy in order to strive for HK's objective of carbon neutrality by 2050.

There was heavy emphasis on waste reduction and circular economy in the new waste blueprint of 2035, and HKWMA in general is in support of the approach but feels that the Government must impose their will and determination to ensure their proposed actions would not be delayed further. There have been positive impacts from the Producer Responsibilities Scheme on Plastic Shopping Bags, WEEE, and Glass Beverage Containers since their implementation, and thus it is of our opinion that the Government must expedite their policy implementation on waste charging in order to promote waste segregation and recycling (especially on plastics) in order to detach the City off its reliance on landfill, and to create an environment that allows opportunities to capture and develop a commercially viable and sustainable recycling industry which requires mechanisms to make other disposal or recycling choices more attractive than disposal to landfill. The implementation of MSW Charging has been seen to affect substantive change in people's behavior towards recycling and recovery of resources, especially when coupled with source separation. This in turn yields a larger supply of resources for the recycling industry to operate in a sustainable manner. The potential increase in supply of recyclable material does require there to be in place supporting treatment/processing infrastructure so that the public can be reassured that the material is being properly recycled. The private sector and NGO's are already embarking on numerous initiatives to get themselves ready for more substantive change that may arise from MSW Charging. Continuous education and public engagement on recycling are obviously agenda items that need to be taken into consideration.

The consequences of inaction are that our landfills will continue to swell and the shift change required in per capita disposal rate will remain unattainable with valuable recycling resources going to waste. There have been many successful stories on waste charging, in particular Taiwan and Korea where they have similar cultural and waste management challenges to Hong Kong. It is of paramount importance for Hong Kong to take references from these successful cases and HKWMA stands with many others in the community in support of MSW Charging Legislation for the sustainable future of Hong Kong."





# Mentoring and Career Sharing

## Mentorship Programme

This summer, HKWMA conducted a mentorship programme to connect graduate students and young members with experienced senior members. Under the pandemic, the opportunity of career fairs or internship has been greatly affected and we aim to build a platform to support young members with experience sharing and career advice.

We have mentors from academia, contractors, consultants, public sector and start-ups covering a broad range of waste management and environmental industries. During the programme, mentors and mentees can decide upon their own meeting schedule. On the other hand, various social/ career activities will be organized by HKWMA to further connect our large group of mentors and mentees. In a longer-term goal, we wish to establish a web-based networking for the HKWMA membership.

To gather support for this endeavour, we sincerely invite passionate members to support and be our mentors. Please register with our YMC ([hkwmaymc@gmail.com](mailto:hkwmaymc@gmail.com)) if you are interested to join us as mentors or mentees.

## Career Sharing in University

Kenny Lok, Director of EnviPro Technology Company Limited and our Executive Committee member, gave a career sharing seminar for engineering students in The University of Hong Kong and The Hong Kong Polytechnic University on 8 April 2021 and 2 November 2020.

Kenny shared his insight into the Hong Kong waste management and environmental industry; and indicated it has become more prominent and is calling for a wide spectrum of talent with forward looking management approach to integrate innovative and advanced technologies. Kenny also introduced the HKWMA student membership and Young Members Chapter and encouraged interested students to join this professional network.

## Talent List

In response to requests from Government to review the coverage of the Talent List under the Quality Migrant Admission Scheme, HKWMA formally expressed its views on the 10 August 2021 with respect qualification requirements for experienced waste treatment specialists/engineers". We indicate the need for broader coverage of the scheme to cover all types of waste management professionals to meet the challenges of the waste blueprint 2035 as well as recognition of qualifications from recognised professional bodies such as the Chartered Institute of Waste Management







# Events for your Diary

## Forthcoming Events and Events Recently Supported

Date	Event	Organization
29 April 2021	HKIE Environmental Division Forum “Decarbonisation – How do we prepare for the transformation	HKIE – Conducted OnLine
4 June 2021	BEC Enviroseris Conference ‘Redefining Business Leadership for Green Growth’	BEC
September 2021	Green Council presents “UN SDG Achievement Awards Hong Kong”	Green Council
8 October 2021	Annual Reception by HK Green Strategy Alliance, Hong Kong Environmental Industry Association and Hong Kong Productivity Council	Co-organised HKGSA, HKEIA, HKPC
October 2021	ReThink 2021: Sustainable Business Forums and Solutions Expo	Co-organised by BEC
23-26 November 2021	Hong Kong Green Building Council: Advancing Net Zero Conference	HK Green Building Council
TBC	Two Coast Four Place Forum	
Q2/2022	HKWMA Professional Course	HKWMA

## Polite Reminder:

Membership for current session will be extended free of charge for the session 2021-2022



**Promoting Green Recovery  
for Carbon Neutrality**